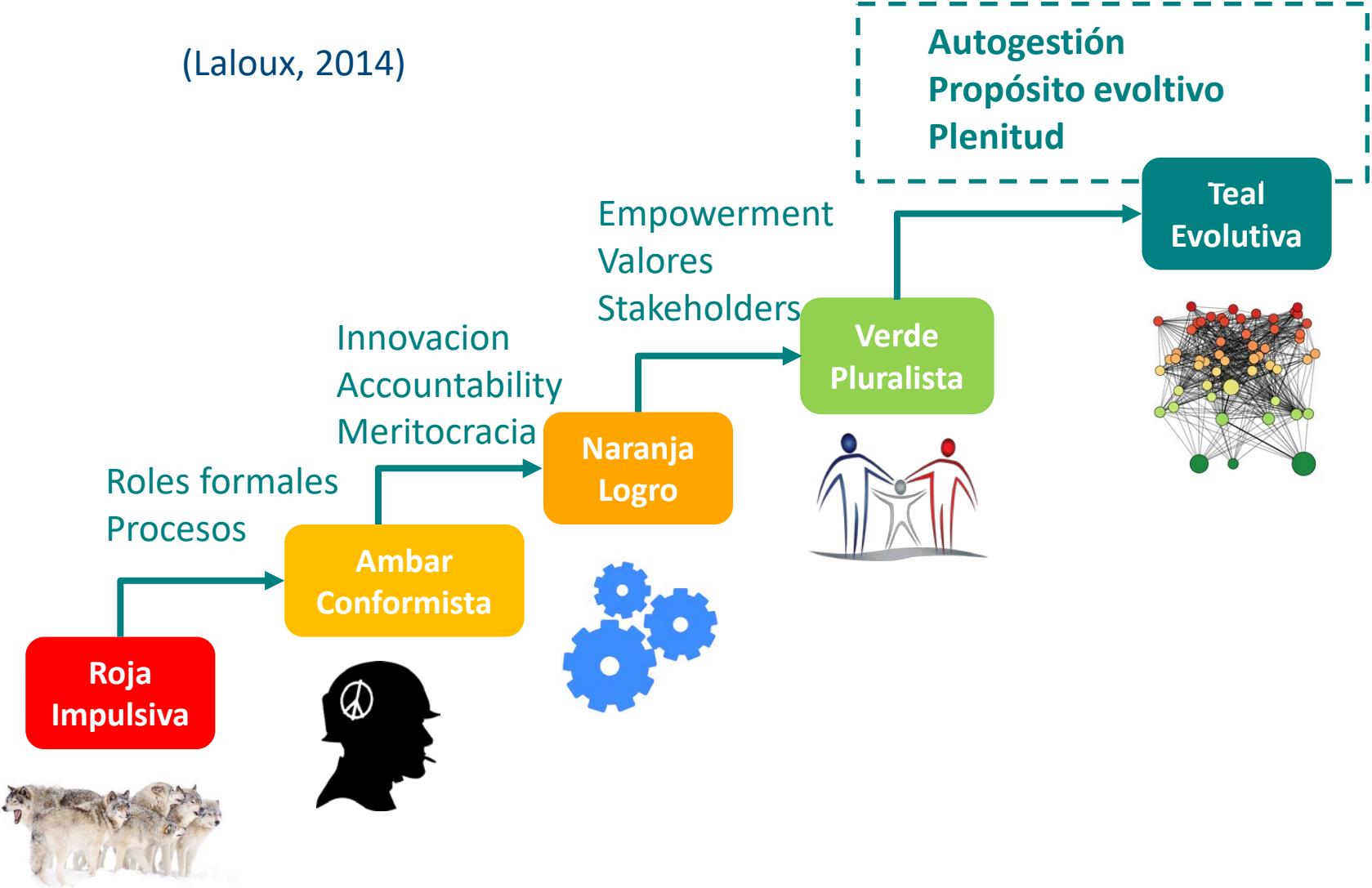


Innovación organizativa en EsF  
13 de enero de 2020

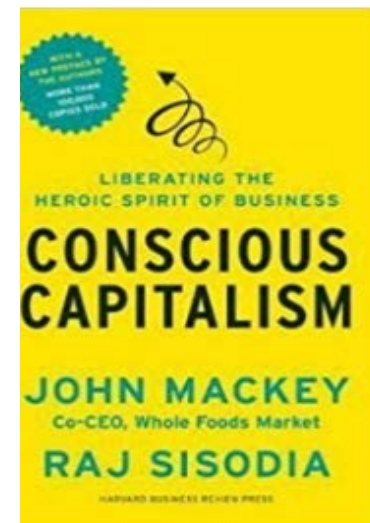
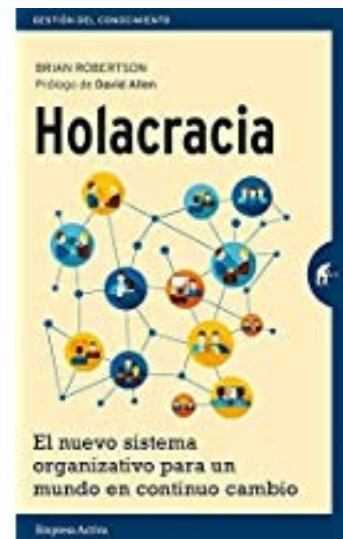
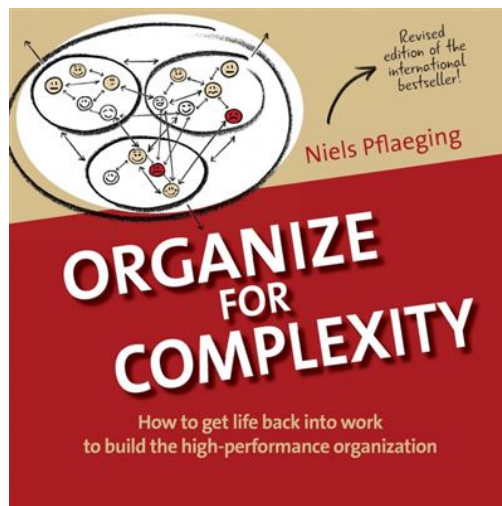
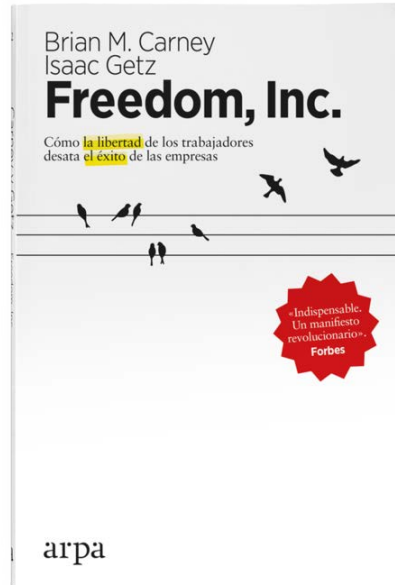
“Estilos de liderazgo en entornos ágiles y humanistas”

# Organizaciones Evolutivas Teal

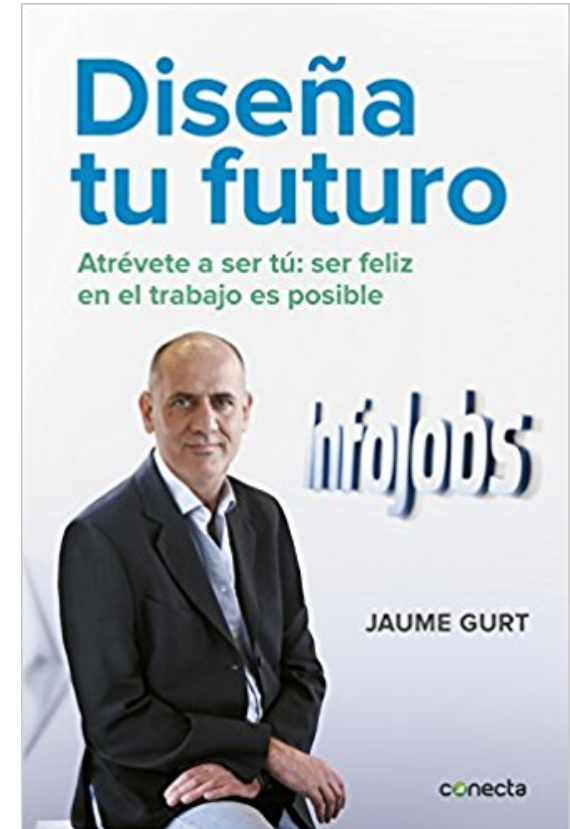
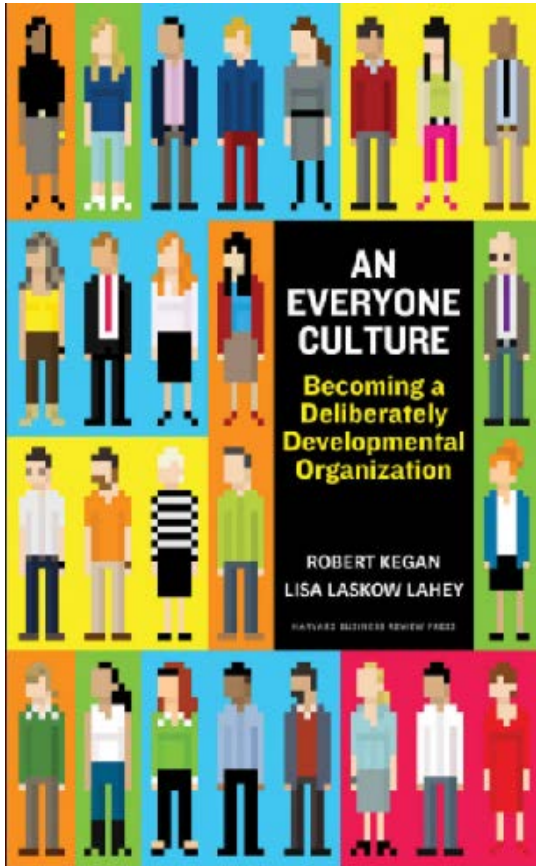
(Laloux, 2014)




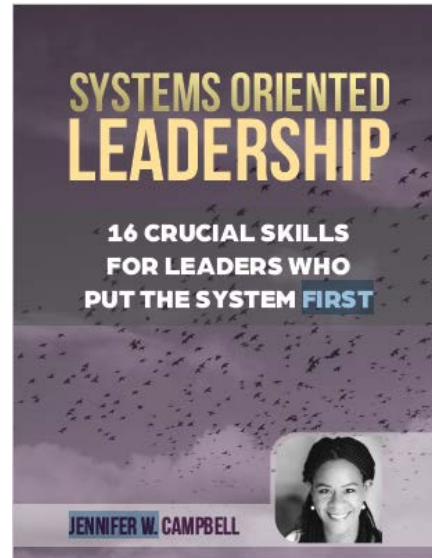
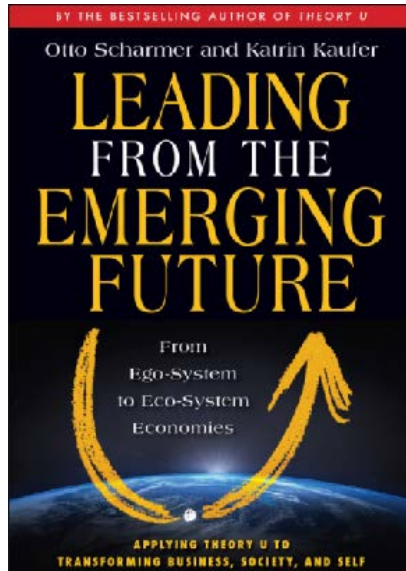
# Propósito y autogestión



# Felicidad y crecimiento en el trabajo







Liminal Leadership

COLLECTIVE INTELLIGENCE

### Liminal Leadership

Published in Fall | Winter 2017 Comments 15

*"We live in a world in which distrust and greed and violence masquerade as common sense, and in which the pathways of distrust and greed and violence are rapidly becoming self-validating. By following those pathways, we create the social and international structures, the premises upon which we must live. By choosing the 'common sense' of distrust, we choose also the progressive truth of distrust. We cause horror to become the only pathway to wisdom." - Gregory Bateson*

